

# Welcome to LBL!



# Shuttle service



 **BUS ROUTES**  
Lawrence Berkeley National Laboratory

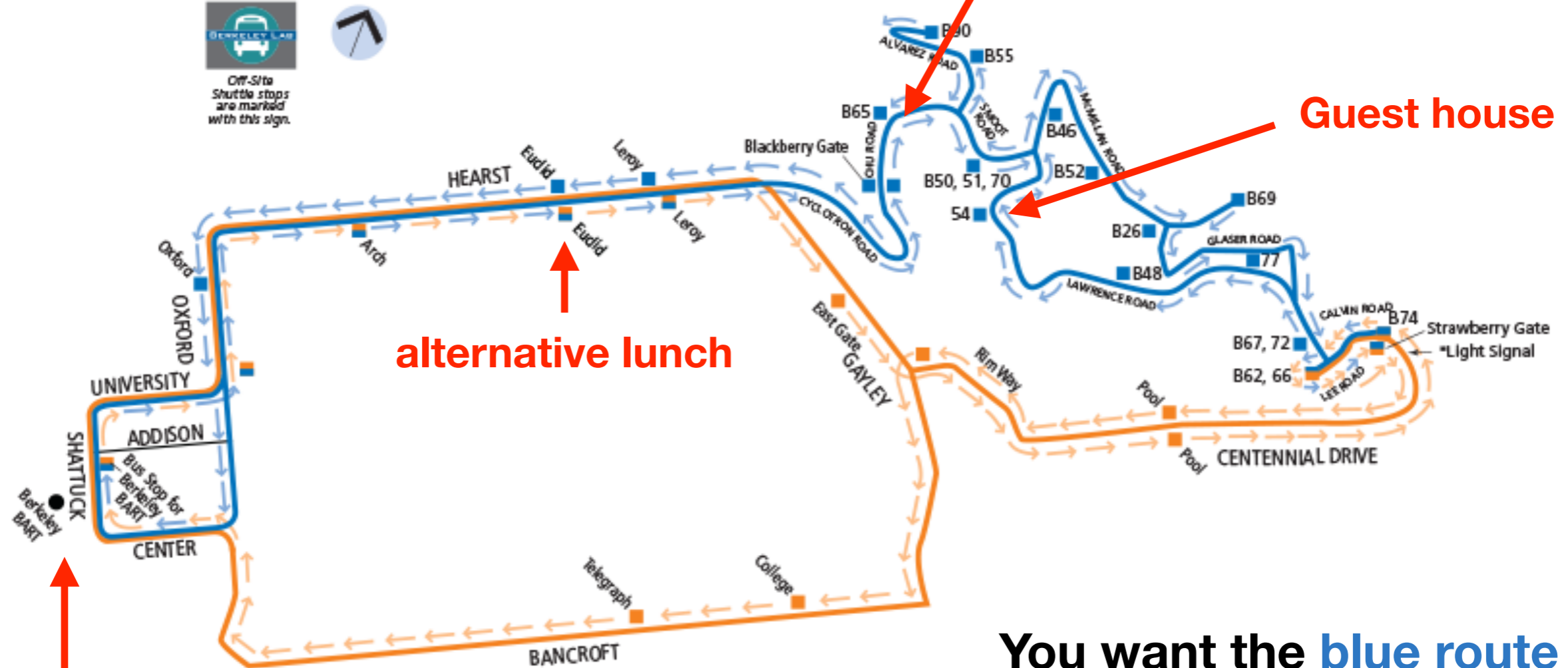
**Blue Route**  
Blackberry Gate

**Orange Route**  
Strawberry Gate

January 2016



Off-Site Shuttle stops are marked with this sign.



Dinner & drinks

alternative lunch

you are here

Guest house

You want the **blue route**  
(every 10 minutes, in theory...)

# Earthquakes are a thing



you are here



Hayward fault



**Drop** down on the floor.



**Cover** under a sturdy desk, table or other furniture.



**Hold** on to furniture if it isn't bolted to the floor and be prepared to move with it.



**Evacuate** to assembly area (usually in parking lot) when shaking stops. Take personal items.



**Follow Directions** from the Building Emergency Team.

# General safety

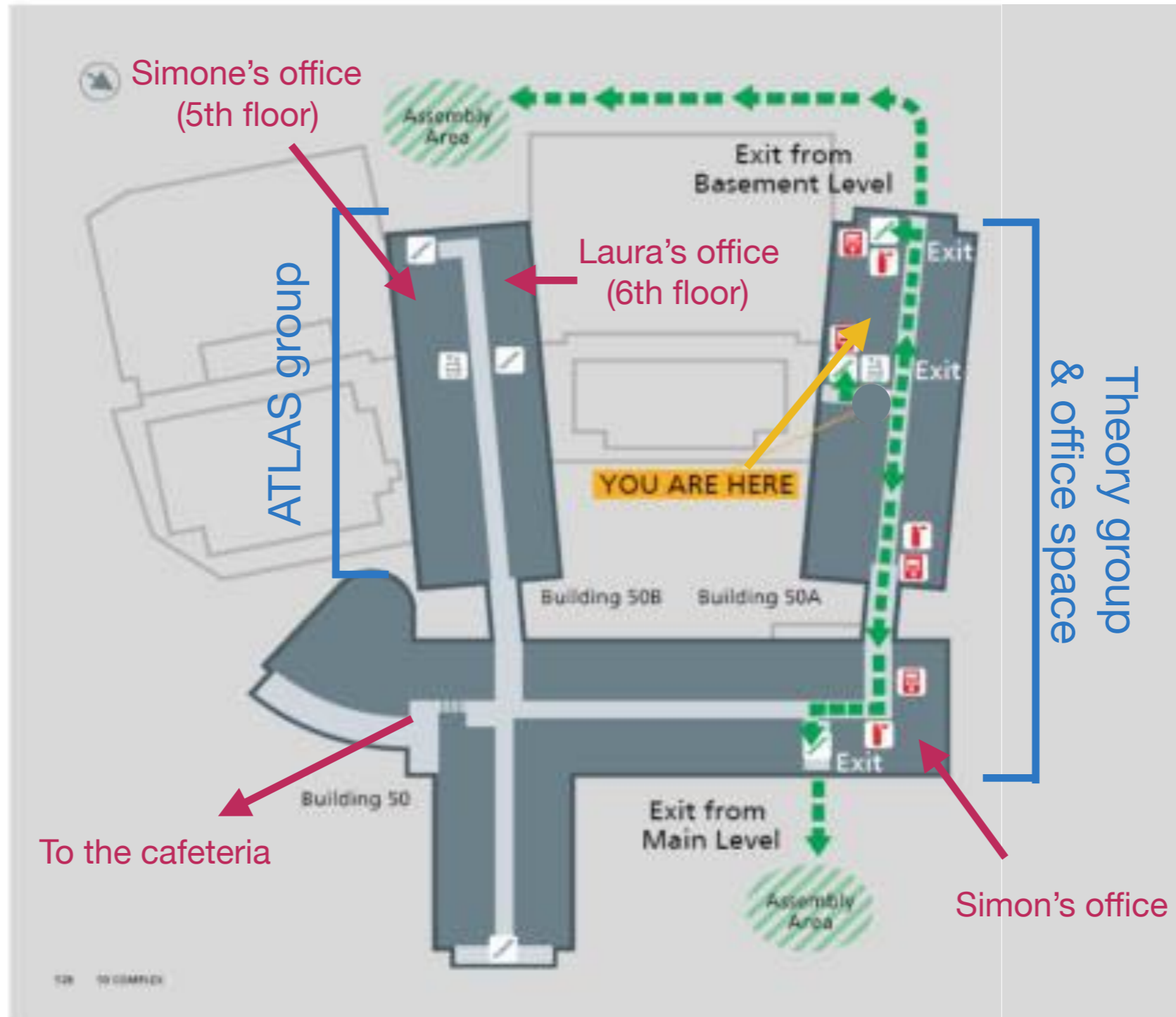


- DOE Facility
- Call 911 from any Lab phone in an emergency
- Due to construction the speed limit is 15 mph
- Do not attempt to touch any wild animals onsite
- No smoking, except outside at designated locations
- Defibrillator located various places on-site, often near building entrances



Look for baby turkeys on the way to the cafeteria

# Building 50





# Coffee!



**Today: 10.30 am & 4 pm (tea only)\***

**Wednesday: 10.30 am & 3 pm\*\***

**Thursday: 10.30 am & 3 pm\*\***

**Friday: 9 am**

\* before Yuri's afternoon talk

\*\* outside patio on 3th floor



Ask Simon ( 0.75\$ each)

# Social stuff



## Wednesday

Dinner at “Great China”, downtown Berkeley at **7:00 pm**  
We can't be late, so we gather here at **6:15 pm**

## Friday

Optional excursion to Point Reyes, after last session  
**Please add your name to the sign-up sheet, even if you have signed up on indico**

Pretty nice



# LLPs are brought to you by



## Berkeley Experimental Particle Physics center (BEPP)

<http://bepp.berkeley.edu/>

Coffee and refreshments

## LBNL theoretical physics group

<http://www-theory.lbl.gov/wordpress/>

Travel support and office space

## Troy Cortez

Logistical and administrative support



# Physics



## Today

- Brian will kick us off
- Presentation and discussion of **projects**
- Yuri will give the physics division's *research progress meeting* (~ colloquium) at 4 pm in **this room**

## Wednesday & Thursday

- **Discussion sessions** to start the day
- The rest of the day is free for **work**

## Friday

- Brief **summary** of results of projects
- Optional excursion in afternoon

**Git repo with tools:** [https://gitlab.com/simonknapen/LLP\\_workshop\\_LBNL](https://gitlab.com/simonknapen/LLP_workshop_LBNL)

Projects can bifurcate, die or new projects can be born

It's largely up to you to decide what is the best way for you to be productive

# Office space

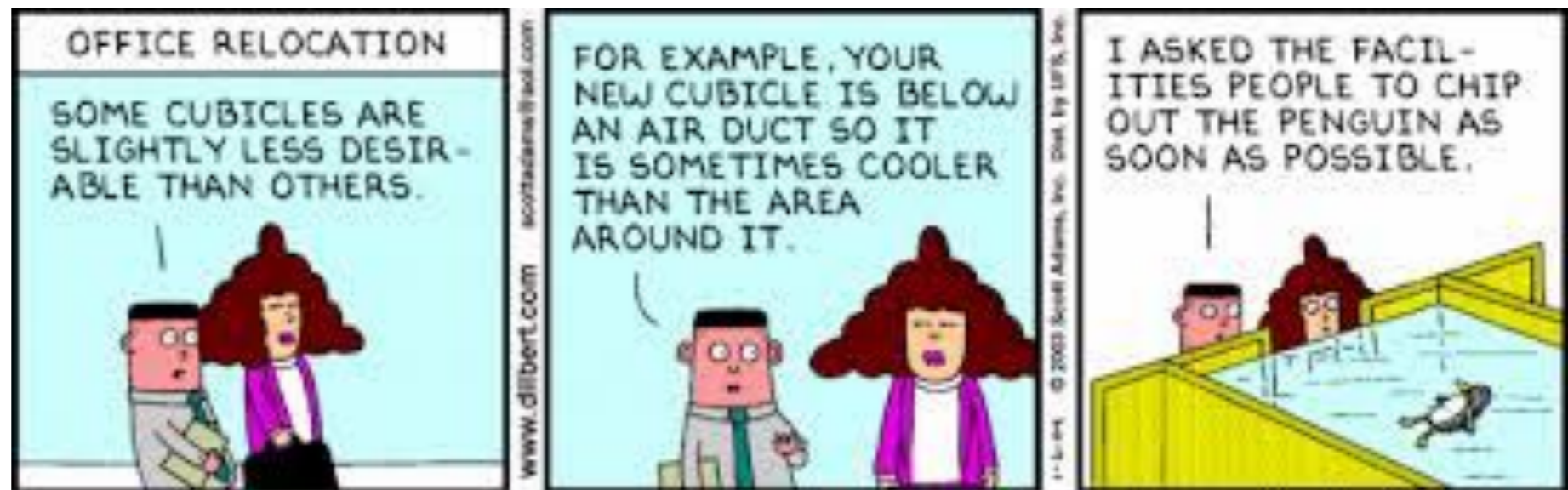


We have 3 discussion areas:

- This conference room
- Dave Jackson discussion room
- Discussion area near Simon's office

We will assign desks after the last project talk, such that we can group people who are on the same project

We don't have office keys for everyone, but the lab is very safe. If you want to lock your office, Simon has a master key





|       |  |                         |
|-------|--|-------------------------|
|       | Welcome  | Simon Kuipers           |
|       | 50A-5132, I RMI                                      | 08:45 - 09:00           |
| 09:00 | Warm-up and motivation                               | Brian Shuve             |
|       | 50A-5132, LBML                                       | 09:00 - 09:30           |
|       | Fine tuning LHCb to increase its sensitivity to LLPs | Clé Xabier Vidal et al. |
|       | 50A-5132, I RMI                                      | 09:30 - 10:00           |
| 10:00 | A trigger for disappearing tracks                    | Laura Jeanty            |
|       | 50A-5132, LBML                                       | 10:00 - 10:30           |
|       |  |                         |
| 11:00 | Explore trigger potential of CMS Tracker Pt- Modules | Yuri Gershtein          |
|       | 50A-5132, I RMI                                      | 11:00 - 11:30           |
|       | Targeting Forward LLPs with Run IV Technology        | Jared Evans             |
|       | 50A-5132, LBML                                       | 11:30 - 12:00           |
| 12:00 |  |                         |
|       |  |                         |
| 13:00 |  |                         |
|       |  |                         |
| 14:00 | New subdetectors for enhanced LLP sensitivity        | Andrew Hoad             |
|       | 50A-5132, LBML                                       | 14:00 - 14:30           |
|       | Precision Timing for LLP: Triggers and physics reach | Si Xie                  |
|       | 50A-5132, I RMI                                      | 14:30 - 15:00           |
| 15:00 |  |                         |
|       |  |                         |
| 16:00 | Research Progress Meeting                            | Yuri Gershtein          |
|       | 50A-5132, LBML                                       | 15:00 - 17:00           |
| 17:00 |  |                         |

Project presentations & feedback from group

Sign up for projects  
Start discussions  
Assign office space

Yuri's talk

# Onwards with physics!



Brian will get us all in the mood