

SCET 2023

27-30 March
Berkeley

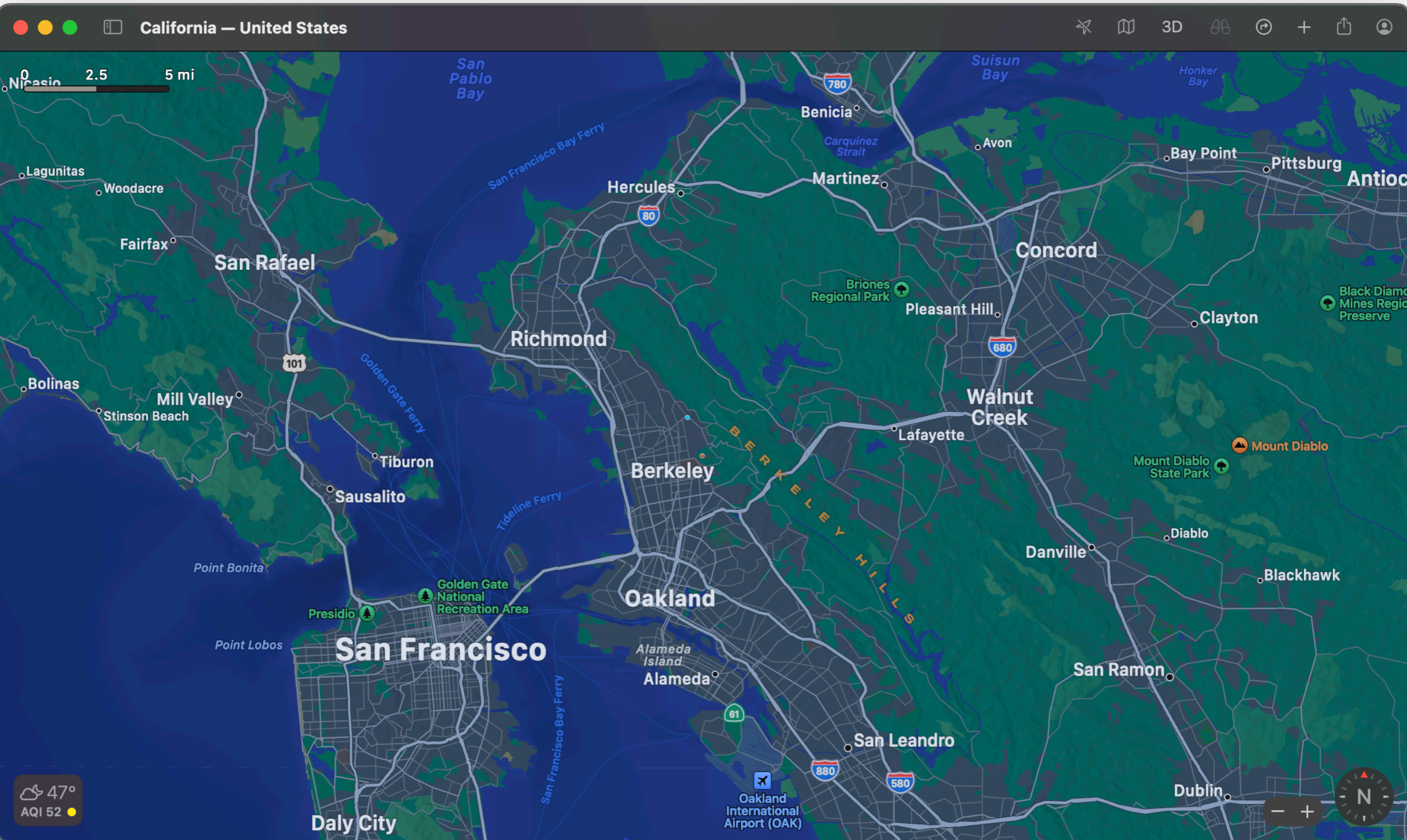
scet23.lbl.gov



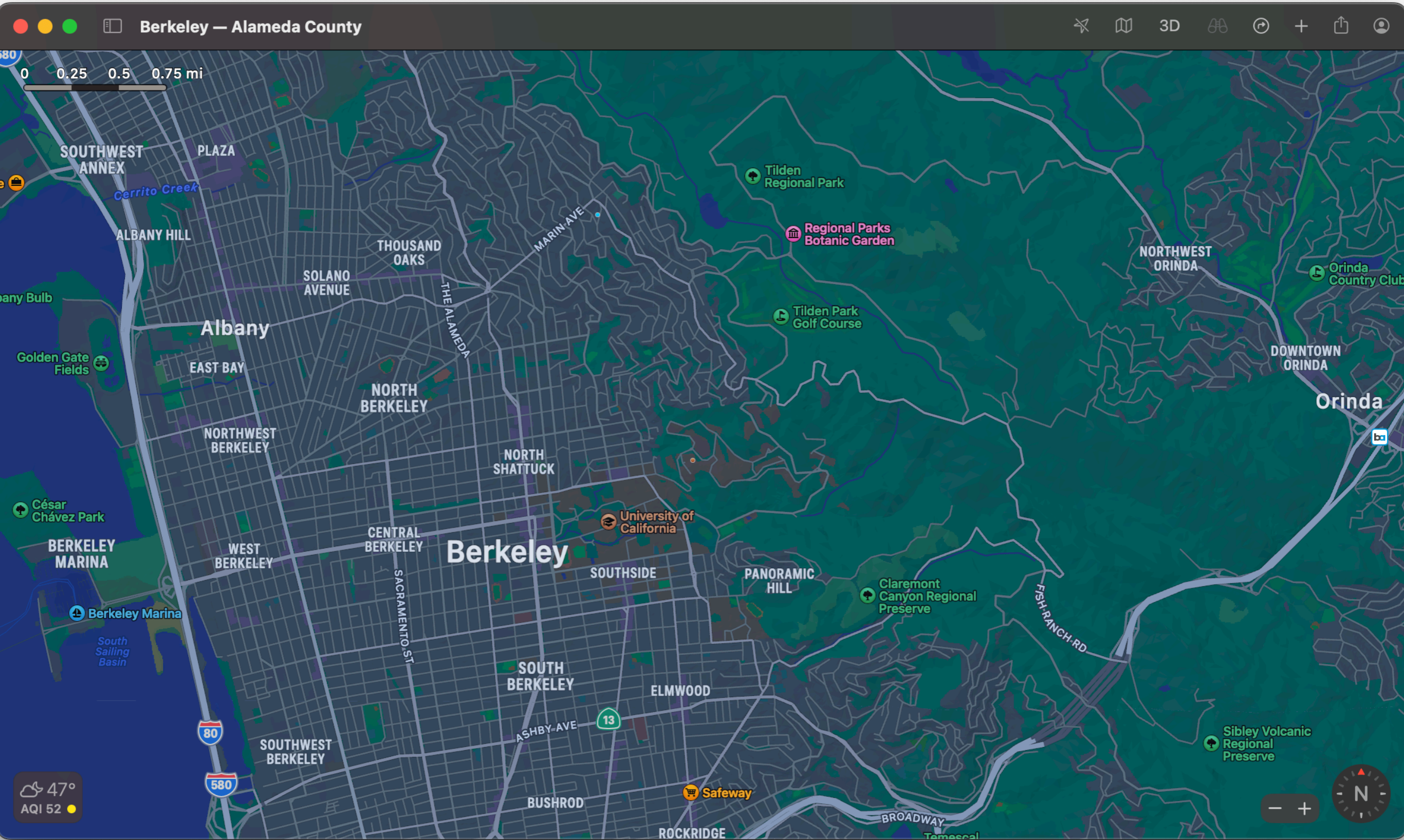
Welcome

Organizer:
Christian Bauer

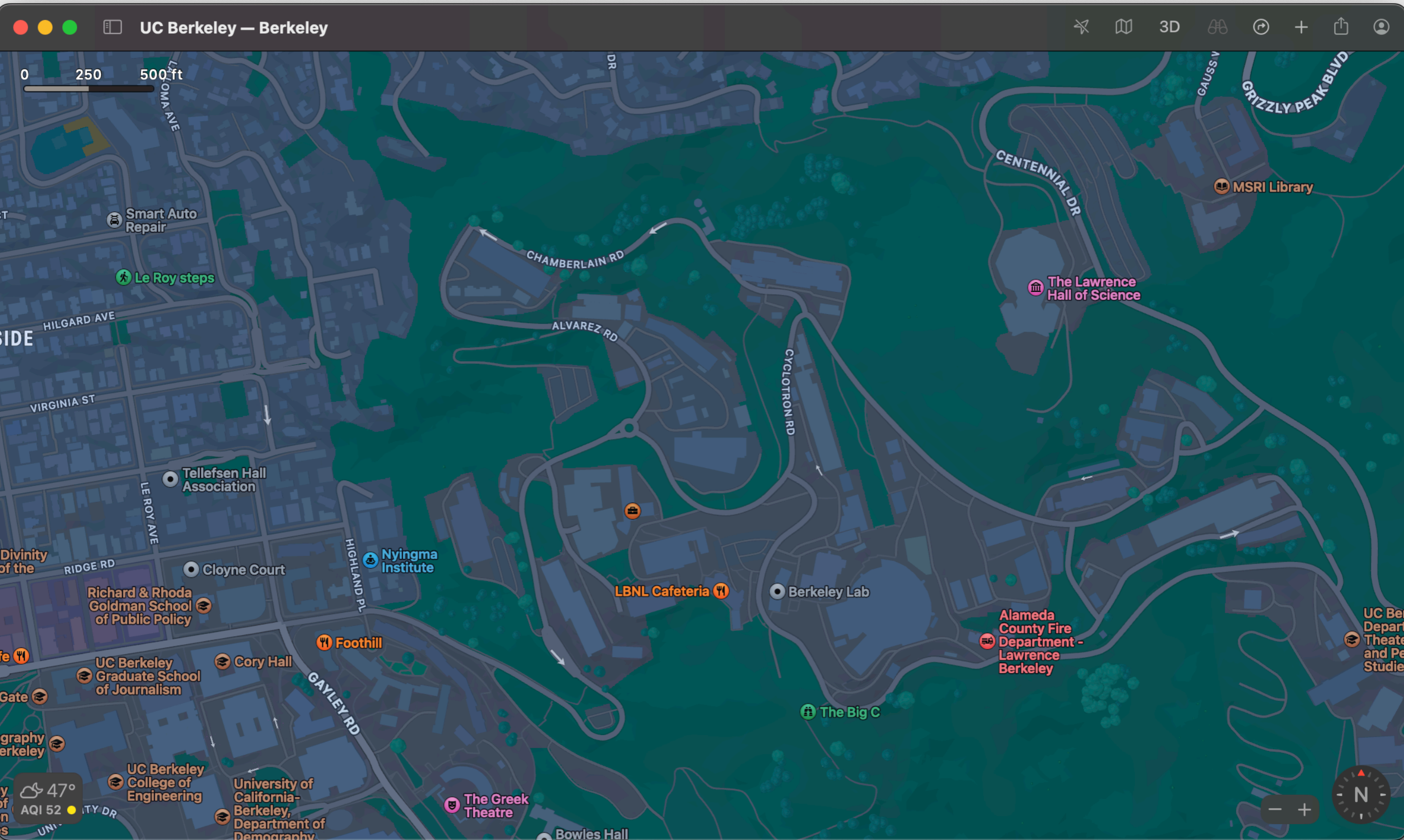
Quick orientation of where we are



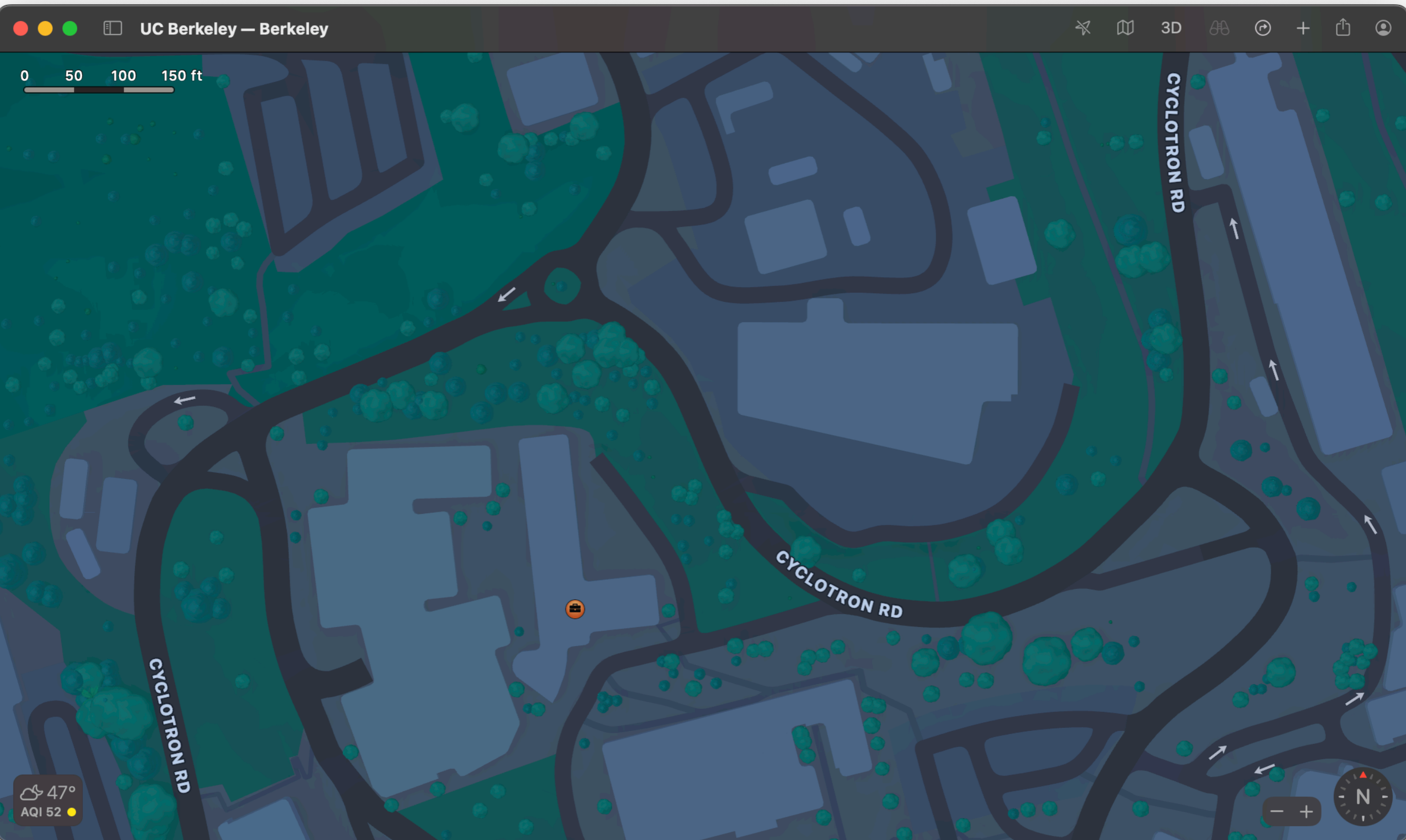
Quick orientation of where we are



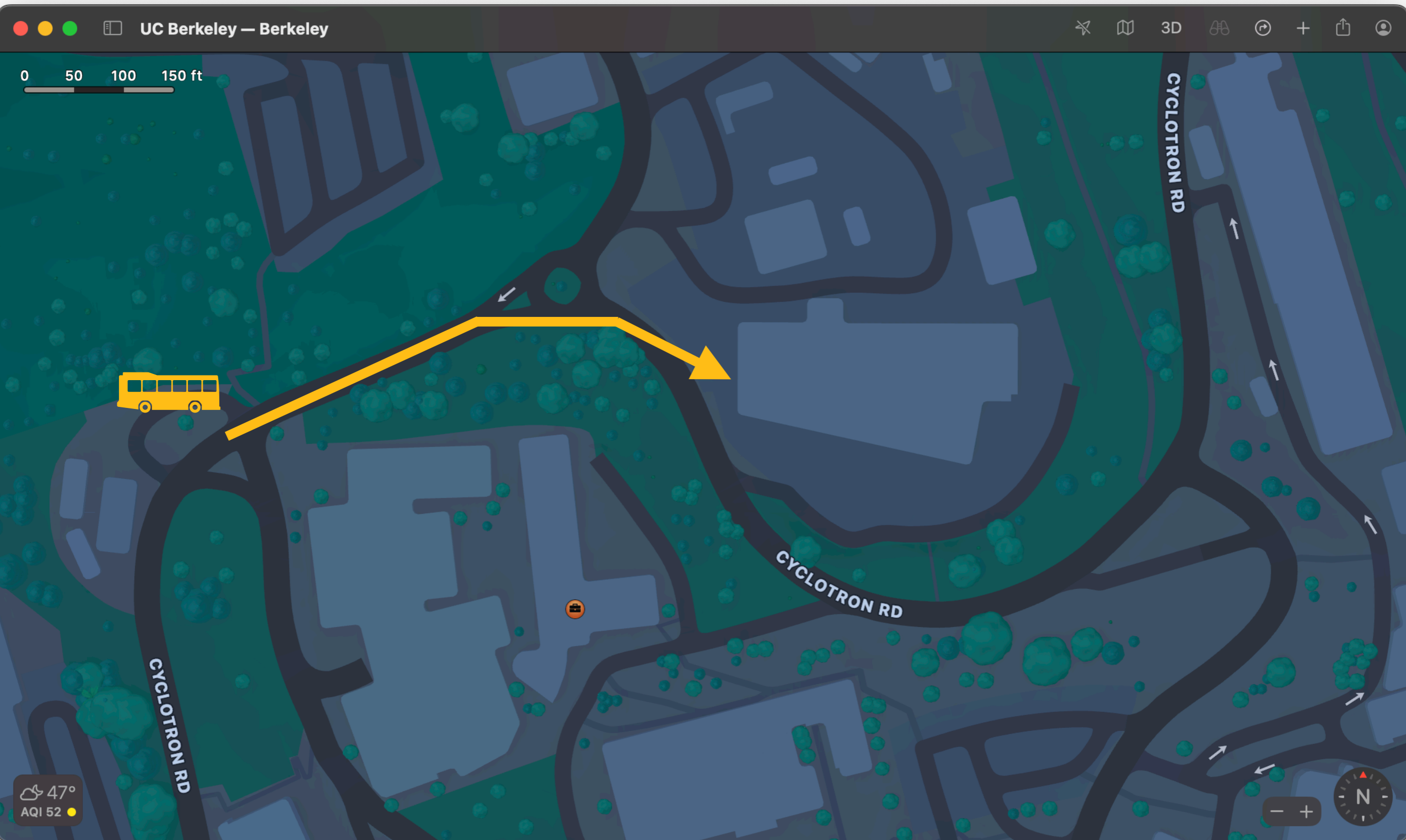
Quick orientation of where we are



Quick orientation of where we are



Quick orientation of where we are



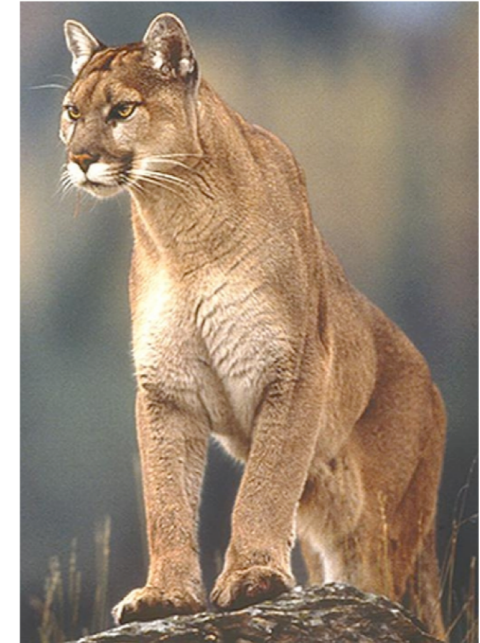
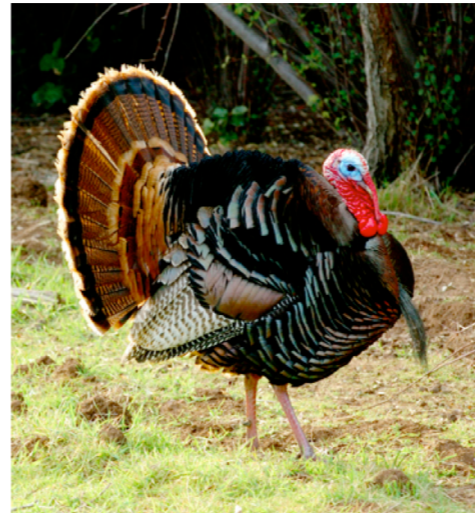
Safety at LBNL

US DOE Facility

- Obey all posted signs

Pedestrian Safety

- Use sidewalk and crosswalks
- Watch your step!
- Do not interact with wild animals



Traffic Safety

- Speed limit is 15 mph on most of site due to construction
- Follow traffic, parking and pedestrian signs and markings

Smoking

- In designated areas only



Earthquake Response



Drop down on the floor



Cover under a sturdy desk, table or other furniture



Hold onto it and be prepared to move with the furniture

Evacuate to assembly area. Take personal items.

Follow Directions from the Building Emergency Team

Reporting Emergencies

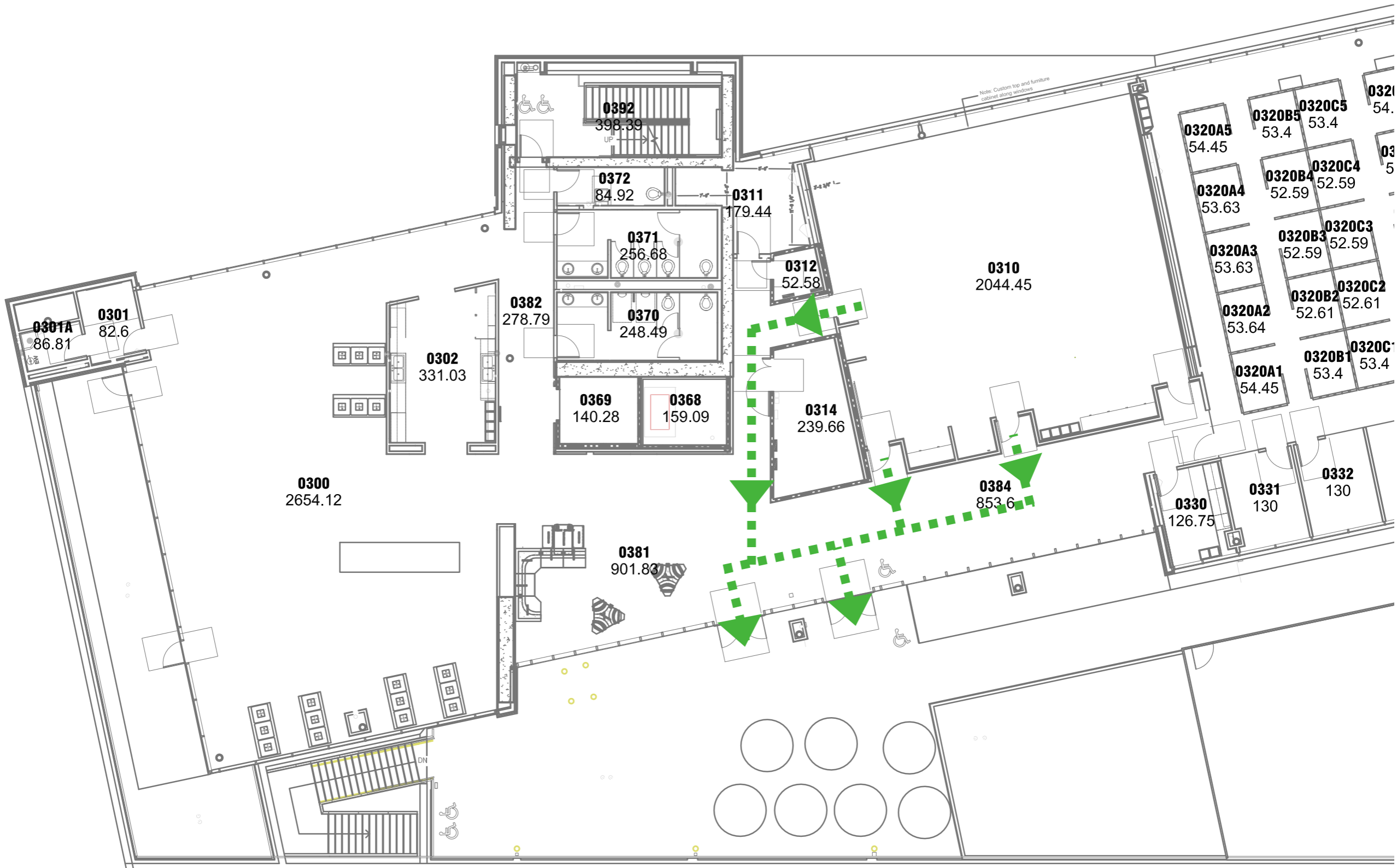
–Dial **911** for life threatening emergencies

–Dial **6999** for non-life threatening events

–Ingrid Peterson, Physics Division Safety Coordinator
cell: 650-714 8180



Some safety reminders



Format of talks

- Use a common laptop for all talks
- (Almost) all talks are 20 minutes long with 10 mins of discussions
- Please upload your talks to Indico at least 2 hours before your session, or send them to me before that same time
- For a blackboard talk, we will have to use iPads (you can use mine if you don't have one)
- Room has ceiling microphones, which are quite sensitive. Try not to have side conversations during talks, both out of respect for speaker and for zoom participants