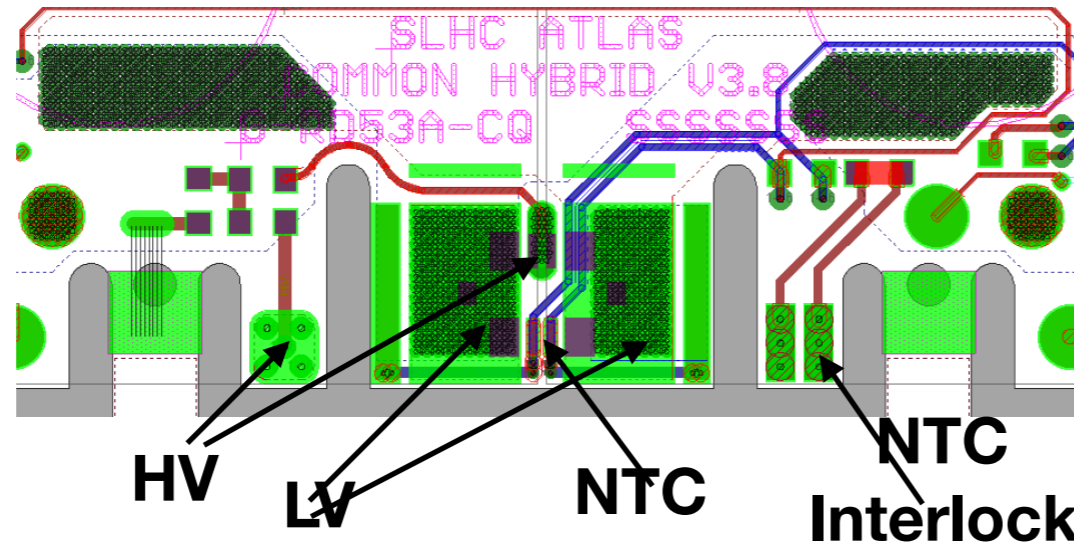
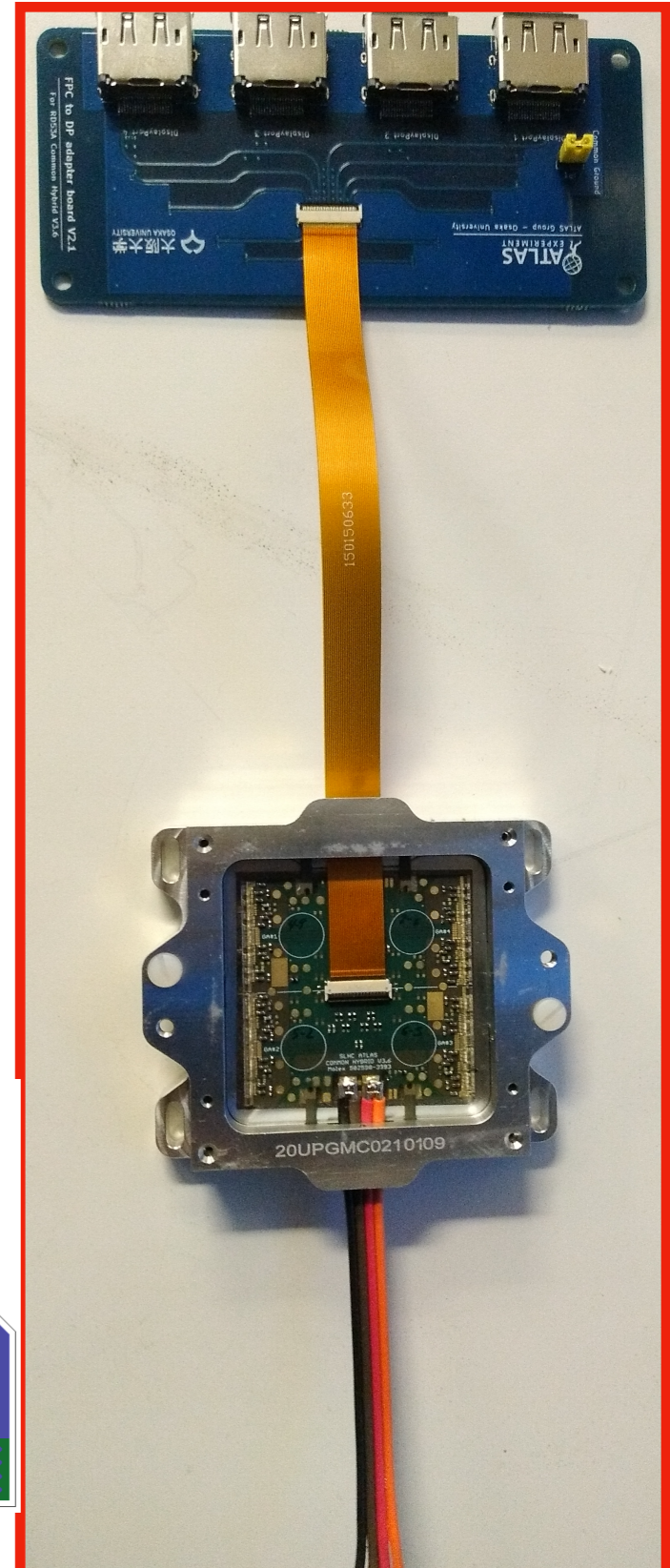
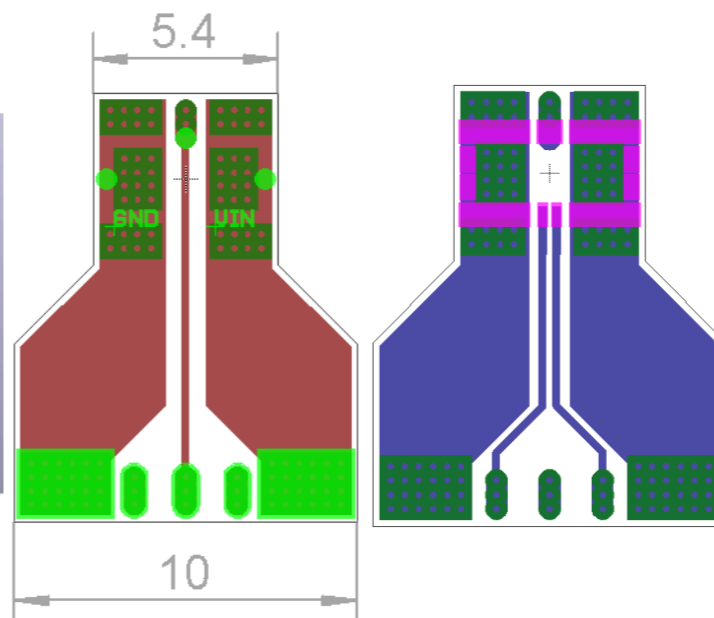
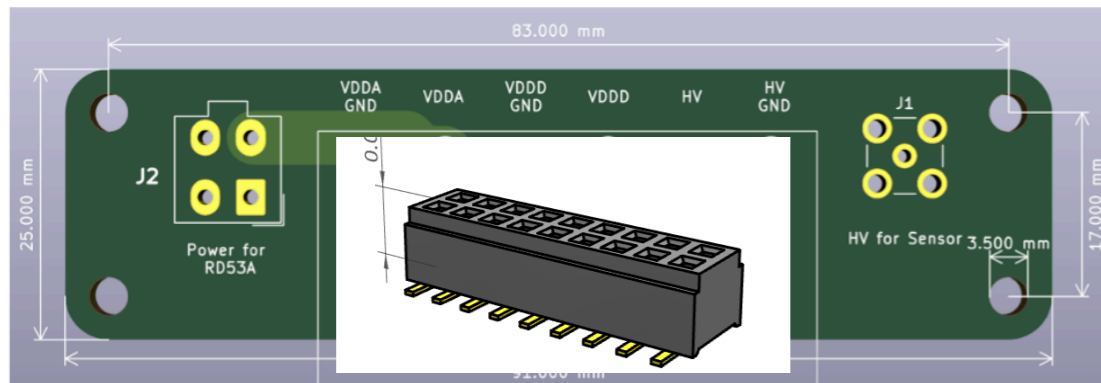


RD53A Quad Testing

- Interfaces:

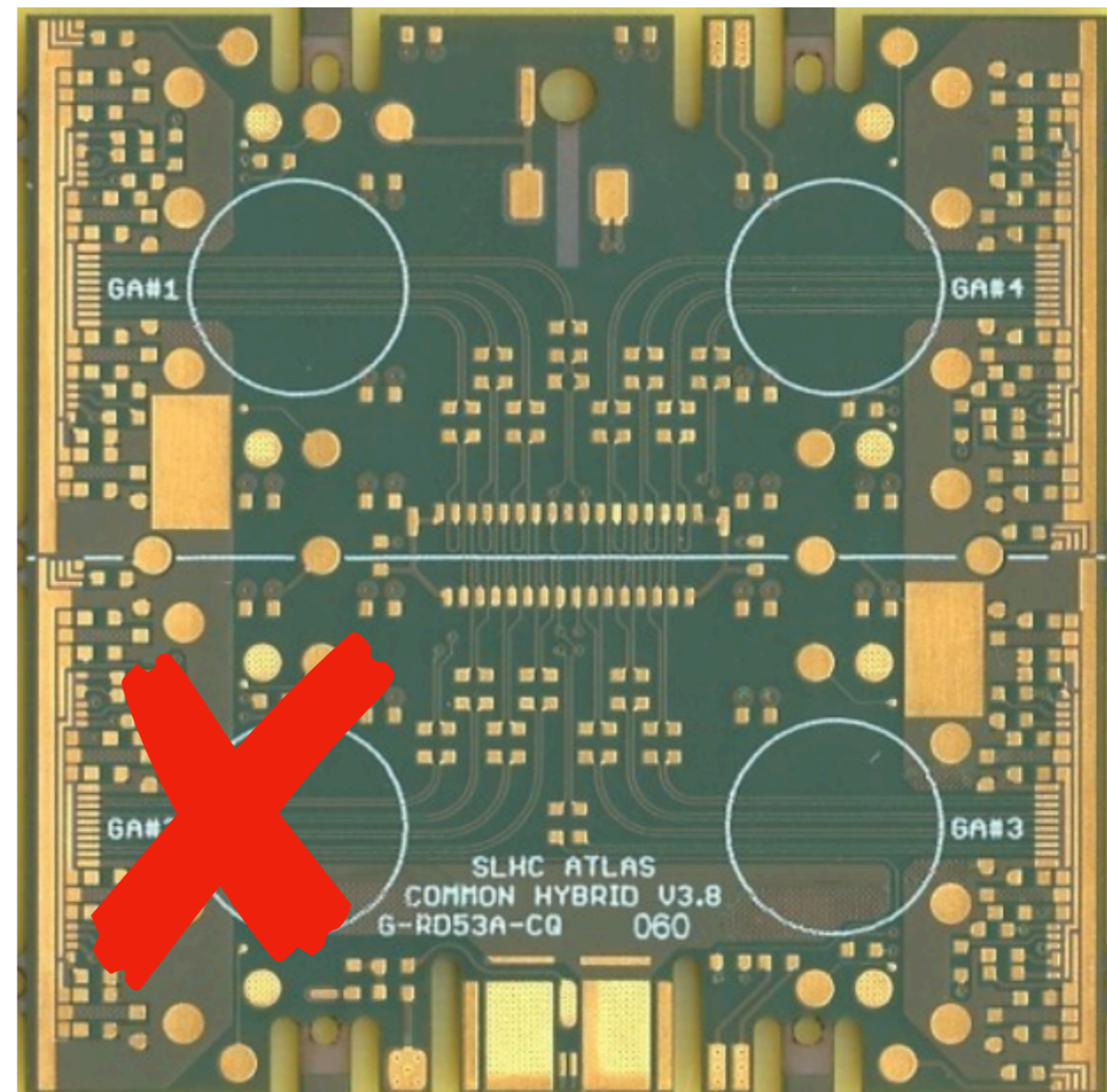


- All subsystems decided to have BM25 loaded
- Power pigtail
- Power adapter card: molex (LV), lemo (HV), Samtec CLM connector



RD53A Quad Testing

- Digital Quads: chips glued and wire bonded to the PCB
- Testing Digital Quad #3 (un-probed chips)
(#1 was with v2.2.2, #2 was with v3.6 - only one chip working)
- Removed SLDO resistors (LDO powering now)
- Correction in the wb diagram for ChipID and PLL/PoR
- Wirebonds pulled out for chip 2
- Chips 1 and 4 configure
- Still can't configure chip 3
- Test another adapter card
(inverted polarity for diff pairs)
- Phat is assembling
3 more digital quads



Backup

RD53A: BM25

